

For Lease

823 SE Ash Gravel Yard Space

NW Corner of SE 9th & SE Ash Street - Gravel Parking Lot, Portland, OR

AVAILABLE!

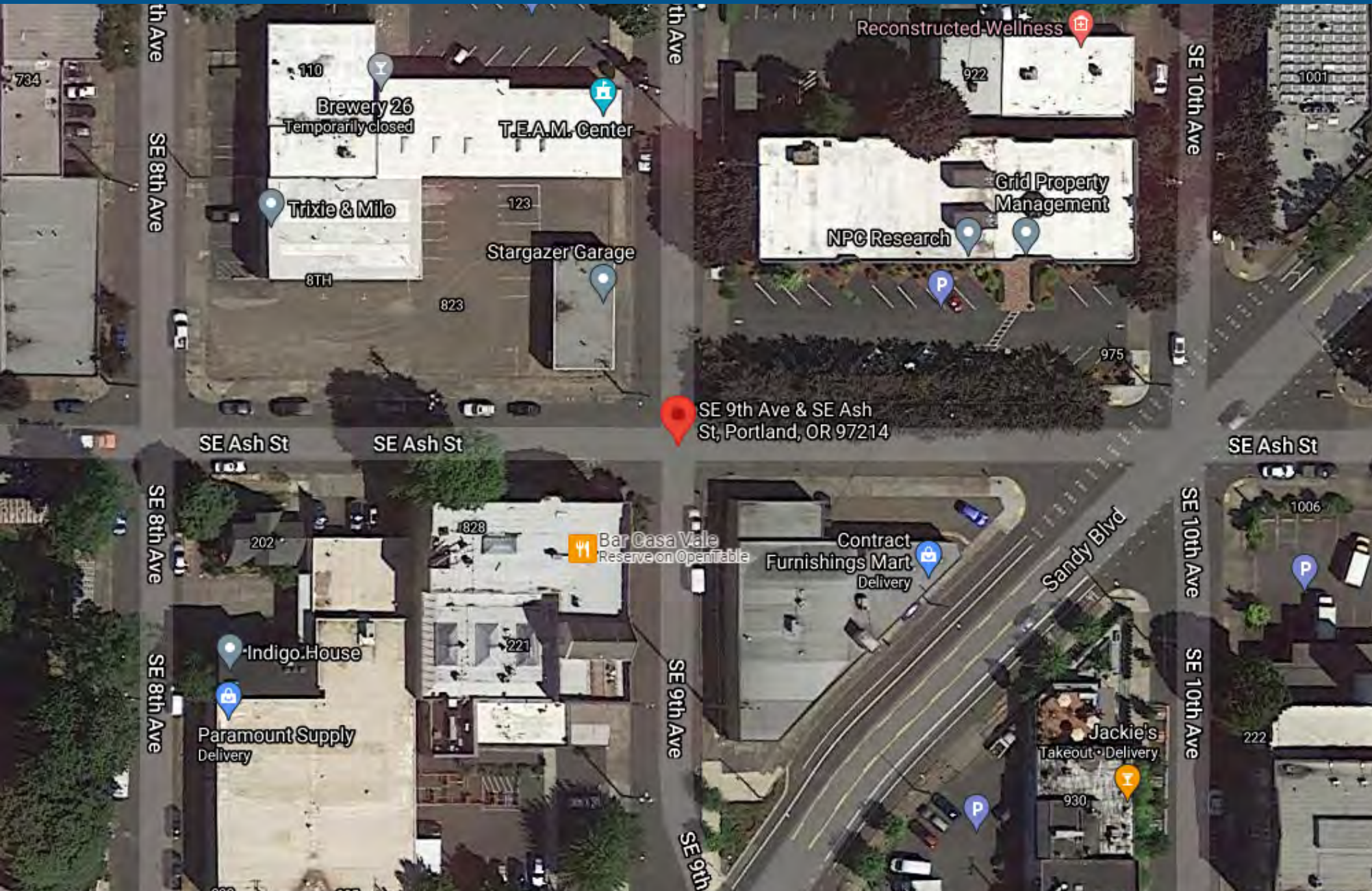
823 SE Ash

NW Corner of SE 9th & SE Ash Street - Gravel Parking Lot, Portland, OR

Kiely@GridPropertyManagement.com

503-303-8281

AshYardStreet.com



823 SE Ash

NW Corner of SE 9th & SE Ash Street - Gravel Parking Lot, Portland, OR

Kiely@GridPropertyManagement.com

503-303-8281

AshStreetYard.com



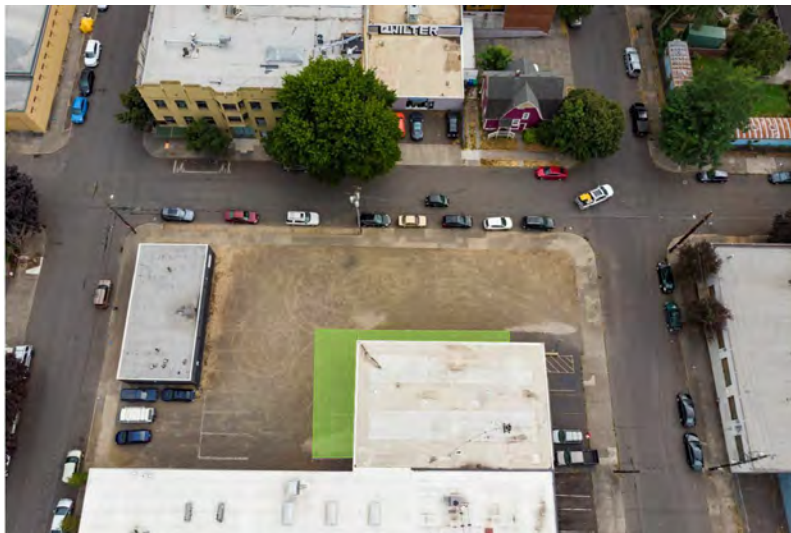
823 SE Ash Street- 9 Parking spots

AMENITIES:

- Large gravel yard space
- Ideal for parking of passenger vehicles, truck/trailer parking, equipment, and shipping containers
- Driveway

PRICING

- \$100/month per spot
- 1-year minimum lease



823 SE Ash

NW Corner of SE 9th & SE Ash Street - Gravel Parking Lot, Portland, OR

Kiely@GridPropertyManagement.com
503-303-8281
AshStreetYard.com



823 SE Ash

NW Corner of SE 9th & SE Ash Street - Gravel Parking Lot, Portland, OR

Kiely@GridPropertyManagement.com

503-303-8281

AshStreetYard.com



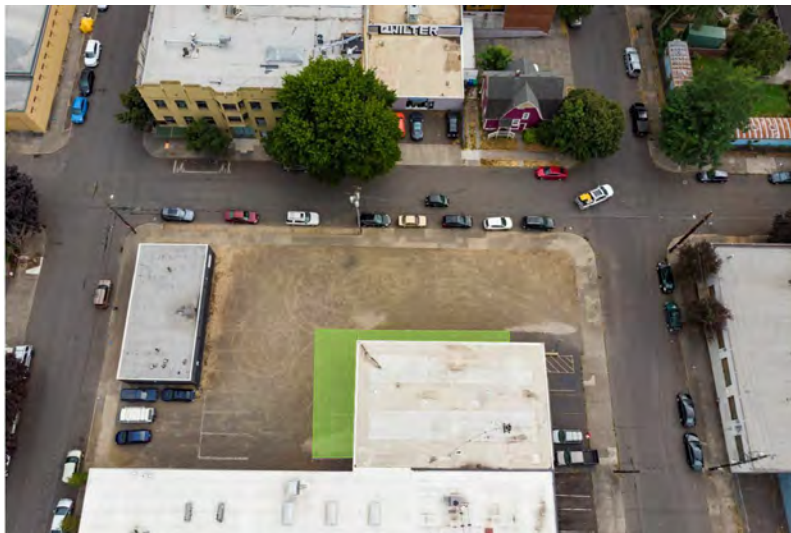
823 SE Ash Street-1 Parking Spot

AMENITIES:

- Large gravel yard space
- Ideal for parking of passenger vehicles, truck/trailer parking, equipment, and shipping containers
- Driveway

PRICING

- \$100/month
- 1-year minimum lease



823 SE Ash

NW Corner of SE 9th & SE Ash Street - Gravel Parking Lot, Portland, OR

Kiely@GridPropertyManagement.com

503-303-8281

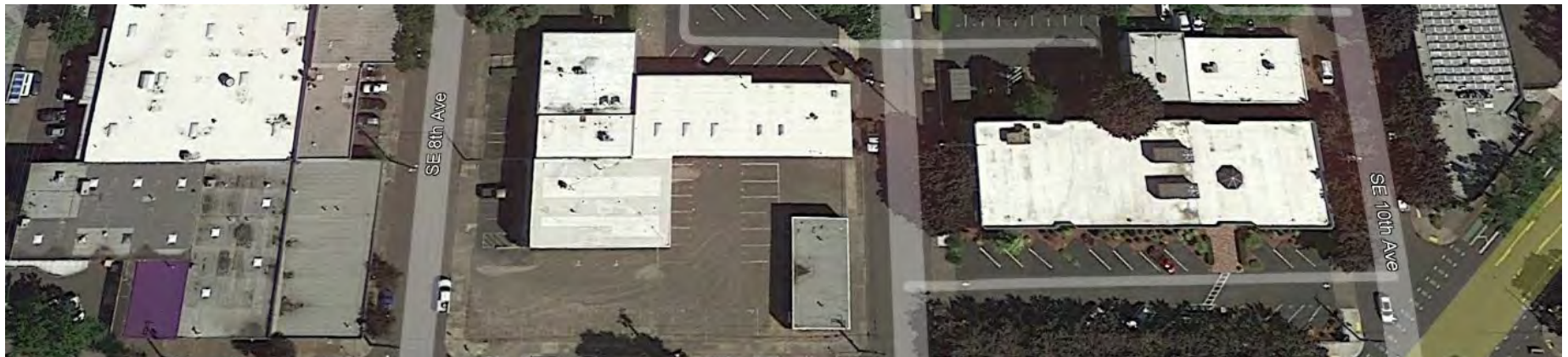
AshStreetYard.com

Contact Us!

Kiely@GridPropertyManagement.com

503-303-8281

AshStreetYard.com



GRID
PROPERTY
MANAGEMENT, LLC

Grid Property Management is a Portland-based property management firm that specializes in the management of commercial, and industrial property.