

For Lease

823 SE Ash Gravel Yard Space

NW Corner of SE 9th & SE Ash Street - Gravel Parking Lot, Portland, OR

LEASED!

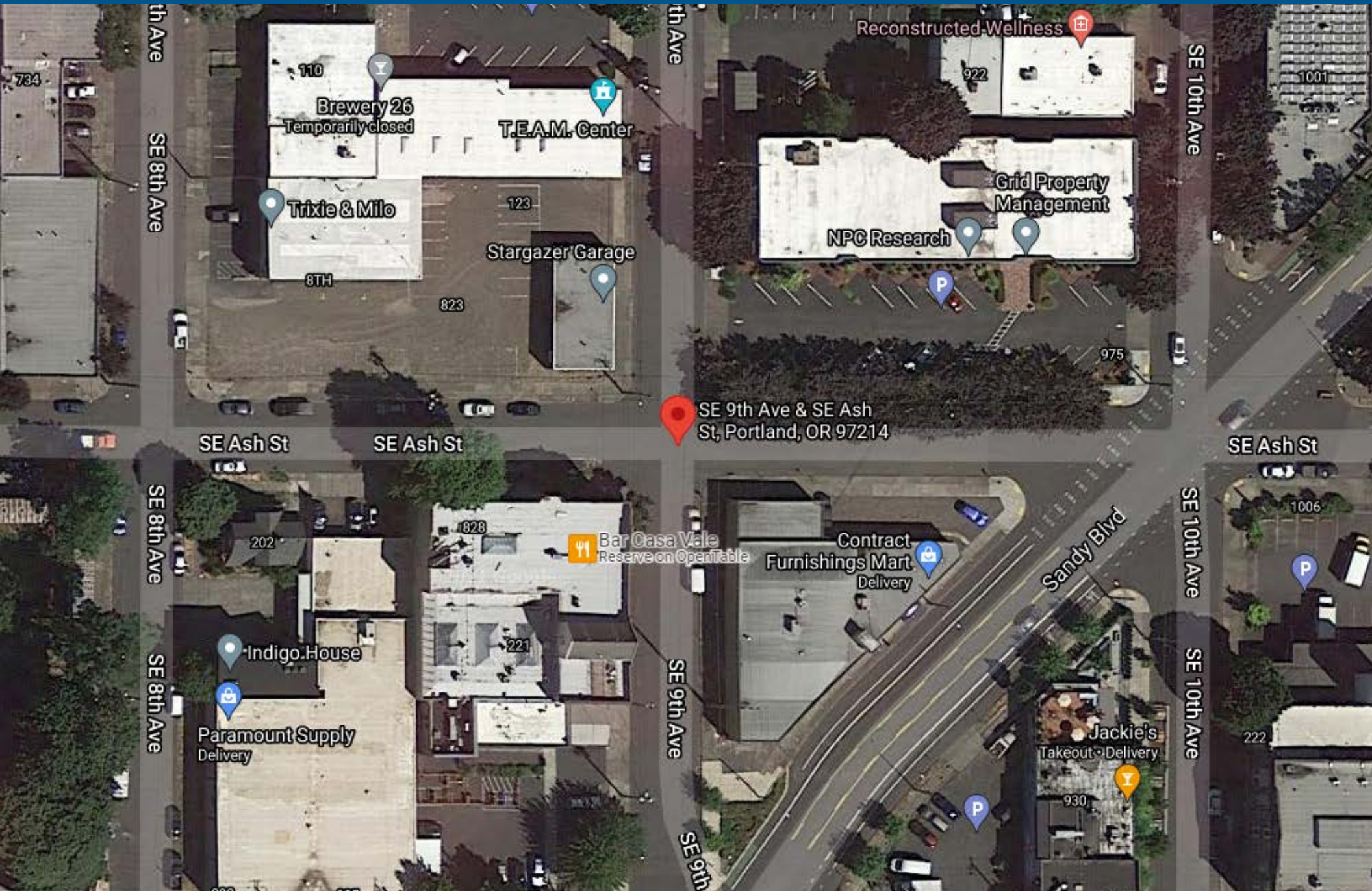
823 SE Ash

NW Corner of SE 9th & SE Ash Street - Gravel Parking Lot, Portland, OR

Kiely@GridPropertyManagement.com

503-303-8281

AshYardStreet.com



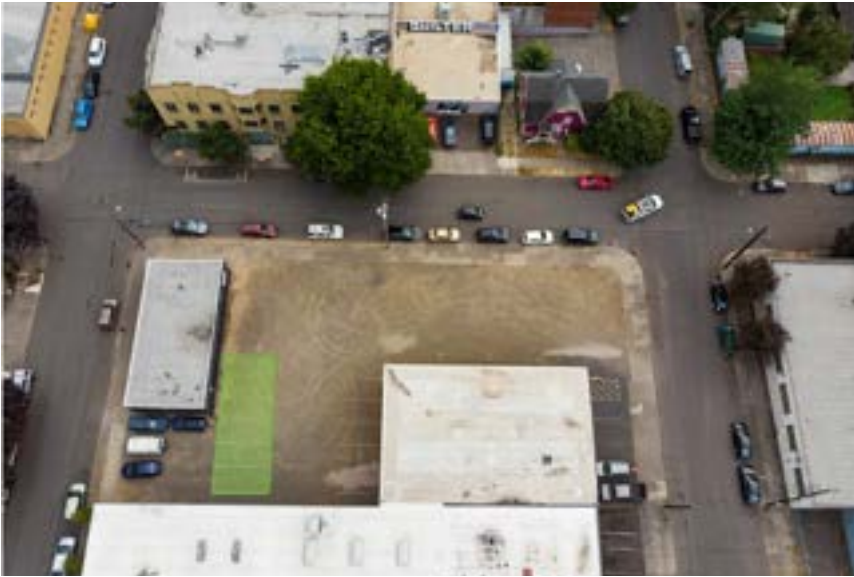
823 SE Ash

NW Corner of SE 9th & SE Ash Street - Gravel Parking Lot, Portland, OR

Kiely@GridPropertyManagement.com

503-303-8281

AshStreetYard.com



823 SE Ash Street- 6 Parking Spots

AMENITIES:

- Large gravel yard space
- Driveway



PRICING

- \$120/month per spot
- 1-year minimum lease
- Available Now

823 SE Ash

NW Corner of SE 9th & SE Ash Street - Gravel Parking Lot, Portland, OR

Kiely@GridPropertyManagement.com

503-303-8281

AshStreetYard.com



823 SE Ash Street- 1 Parking Spot

AMENITIES:

- Car Parking
- Assigned Parking

PRICING

- \$120/month
- 1-year minimum lease
- Available Now



823 SE Ash

NW Corner of SE 9th & SE Ash Street - Gravel Parking Lot, Portland, OR

Kiely@GridPropertyManagement.com

503-303-8281

AshStreetYard.com



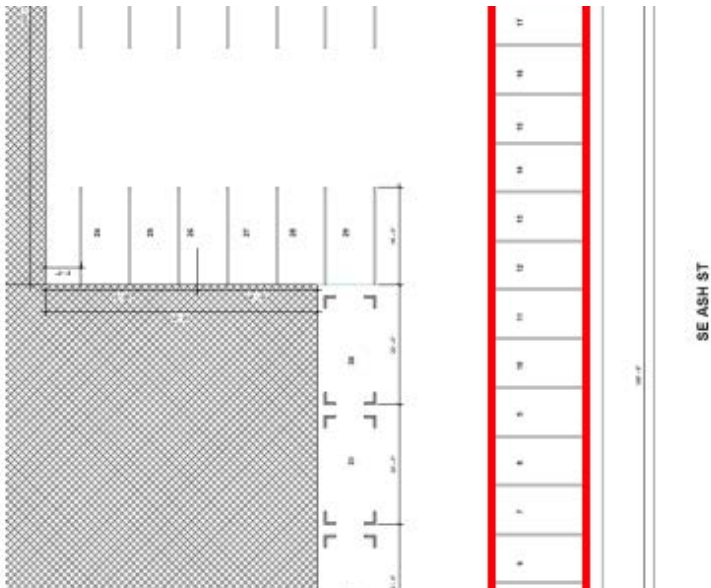
823 SE Ash Street- 17 Parking Spots

AMENITIES:

- Driveway
- Assigned Outdoor
- Parking Car parking
- Trailer Parking

PRICING

- \$1,870/month
- 1-year minimum lease
- Available 12/29/2023
-



823 SE Ash

NW Corner of SE 9th & SE Ash Street - Gravel Parking Lot, Portland, OR

Kiely@GridPropertyManagement.com

503-303-8281

AshStreetYard.com

Contact Us!

Kiely@GridPropertyManagement.com

503-303-8281

AshStreetYard.com



Grid Property Management is a Portland-based property management firm that specializes in the management of commercial, and industrial property.